

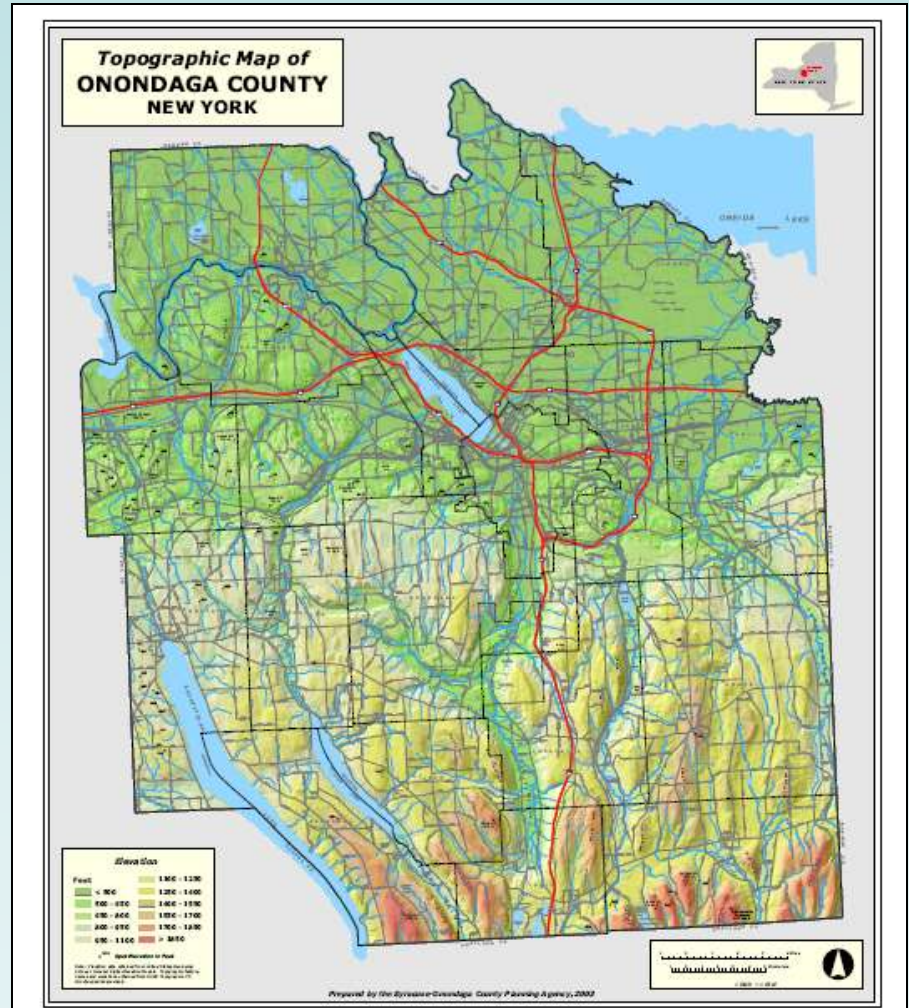
***Land Development In
Onondaga County:
Regional Trends and Challenges***

Onondaga Citizens League

October 20, 2009

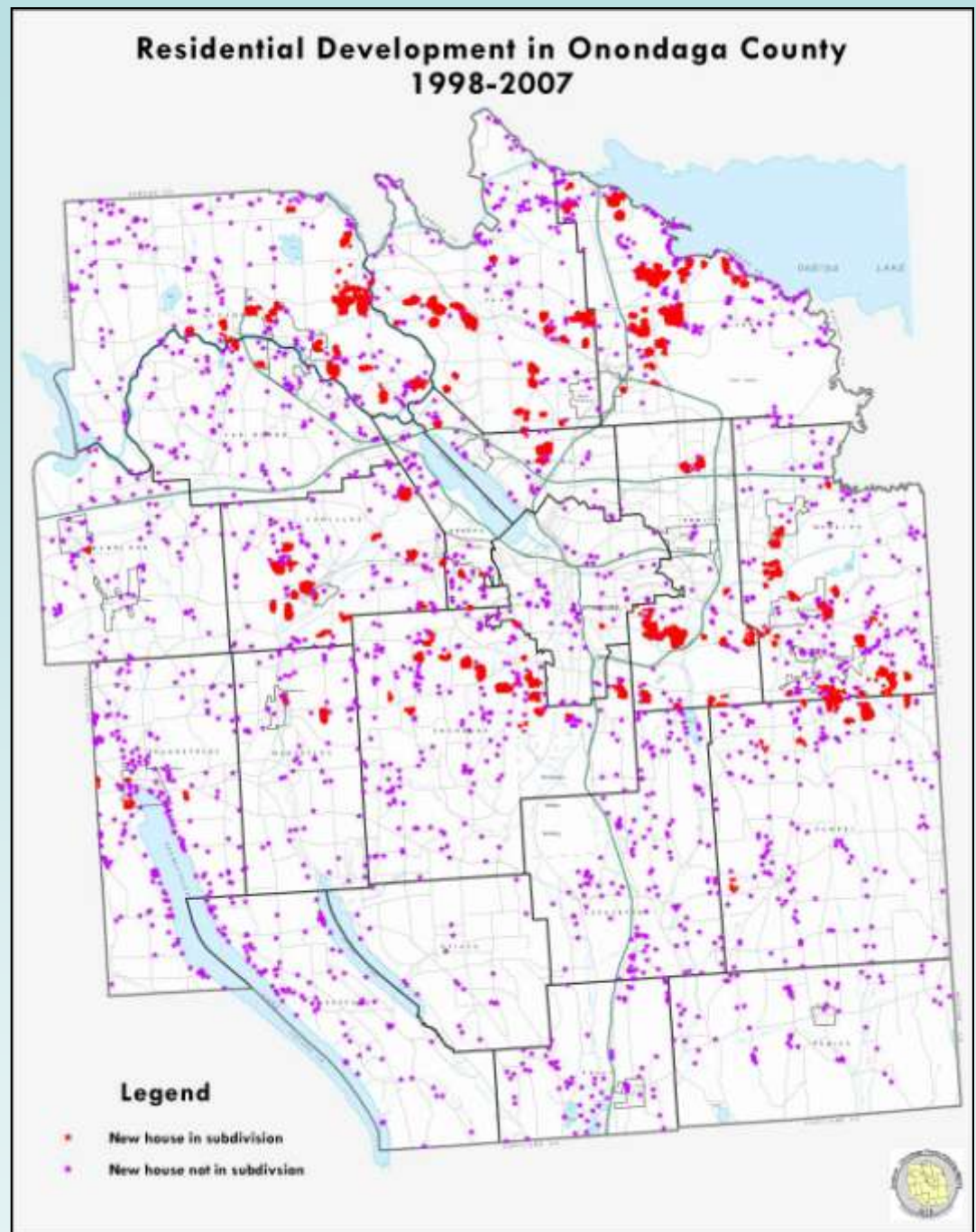
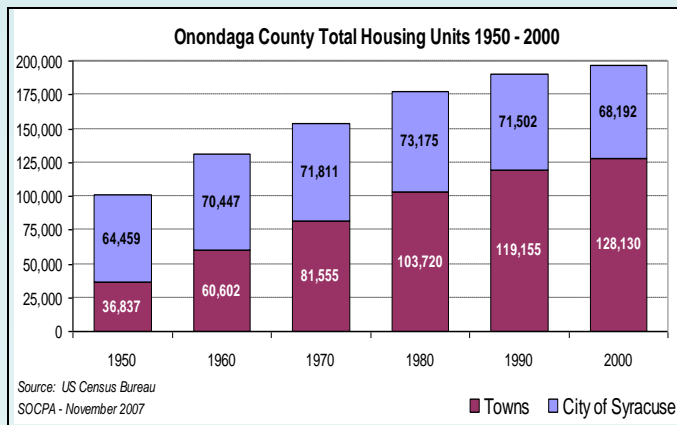


Regional Development Trends & Decisions



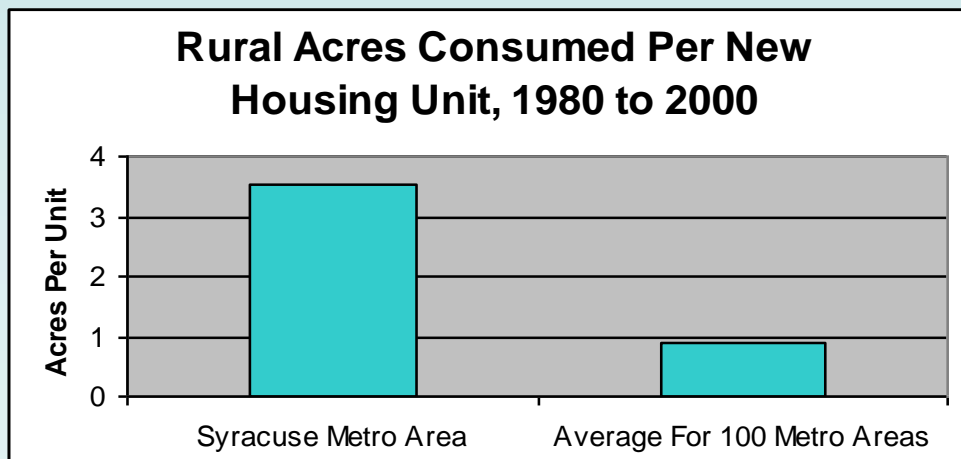
Housing Unit Growth

- 7,000 new units since 2000
- 147 subdivisions
- 2,600 acres
- 160 rural units annually



Housing Unit Growth (continued)

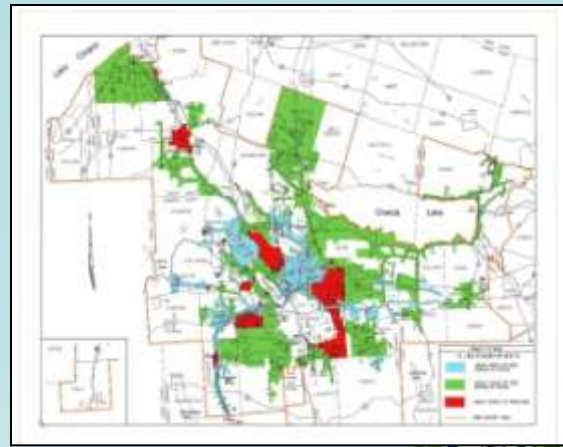
- Home Sizes Up 40%
- Avg. Urban Lot Size = 0.87 ac
Avg. Rural Lot Size = 8.15 ac



Water Infrastructure Expansion

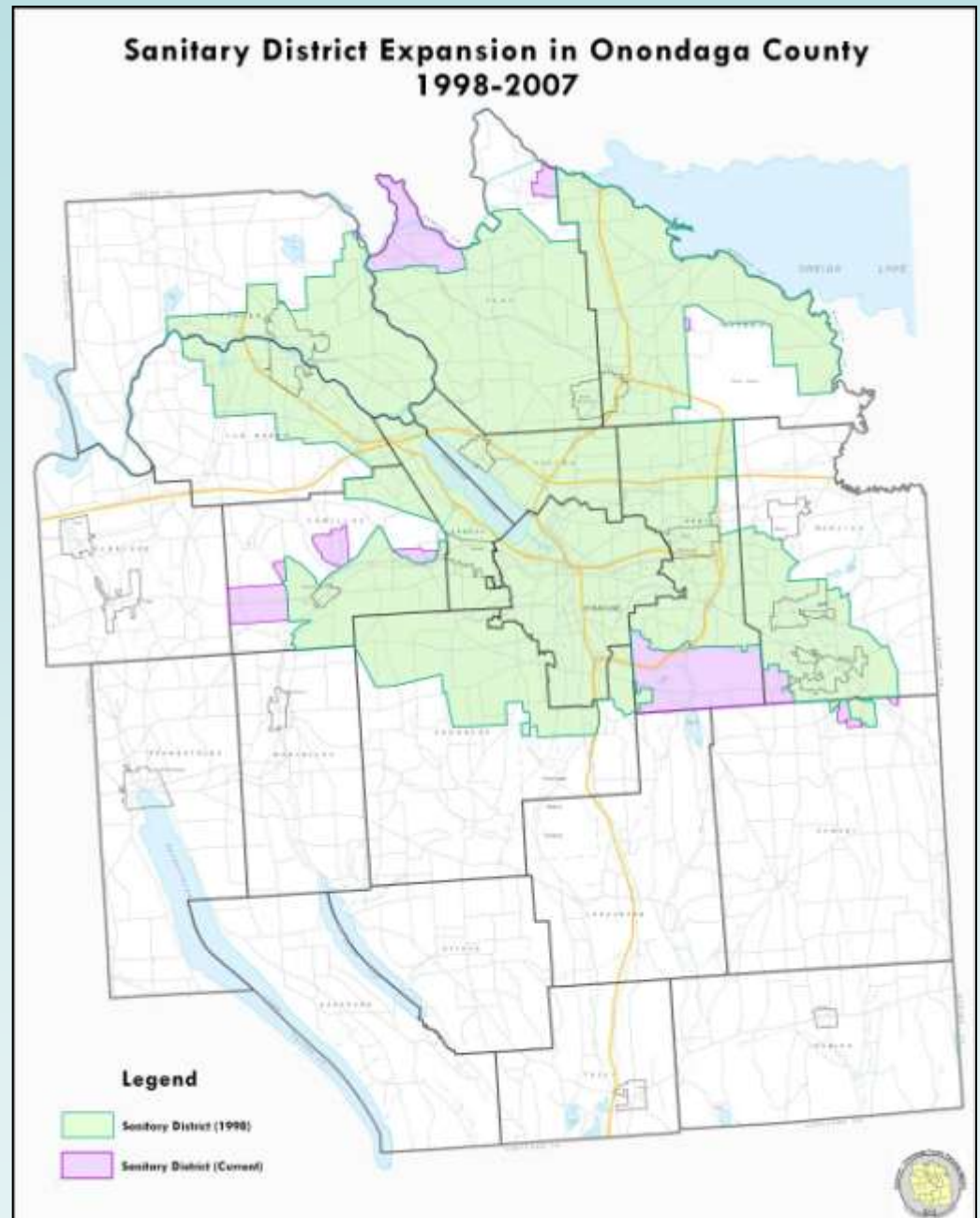
2001-2008

- 290 mi. of new water main
- 1,611 new hydrants
- 13 new storage facilities
- 15 new pumping stations
- **Cost per 1,000 gal up 78%**
- **Annual Water Delivered down 11%**



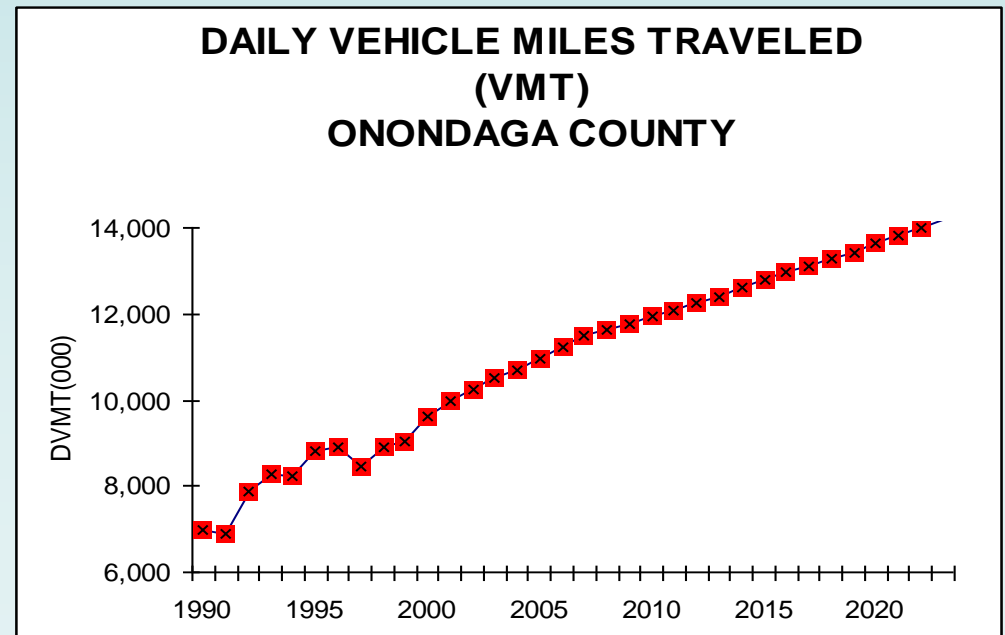
Wastewater and Stormwater Infrastructure

- 57,201 feet of new sewer in 2007
- Added 12,550 acres to Sanitary District since 1998
- Aging Infrastructure, Stormwater mandates, Septic limitations



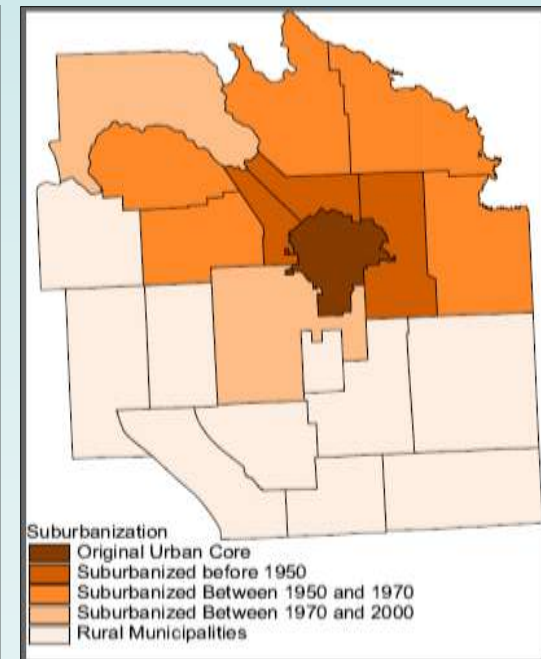
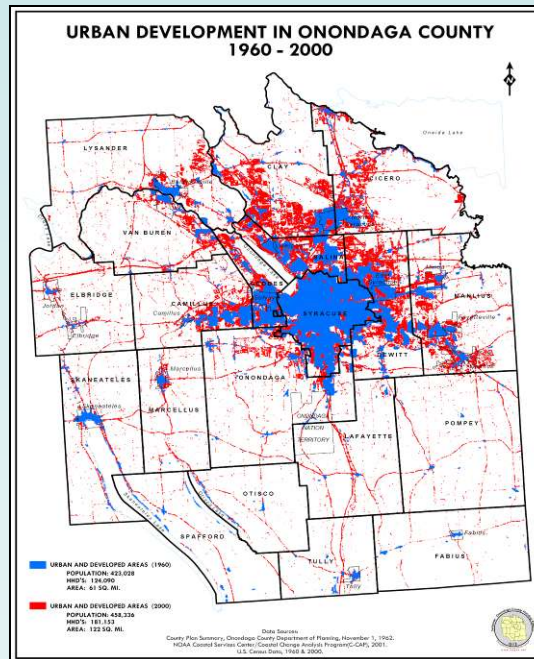
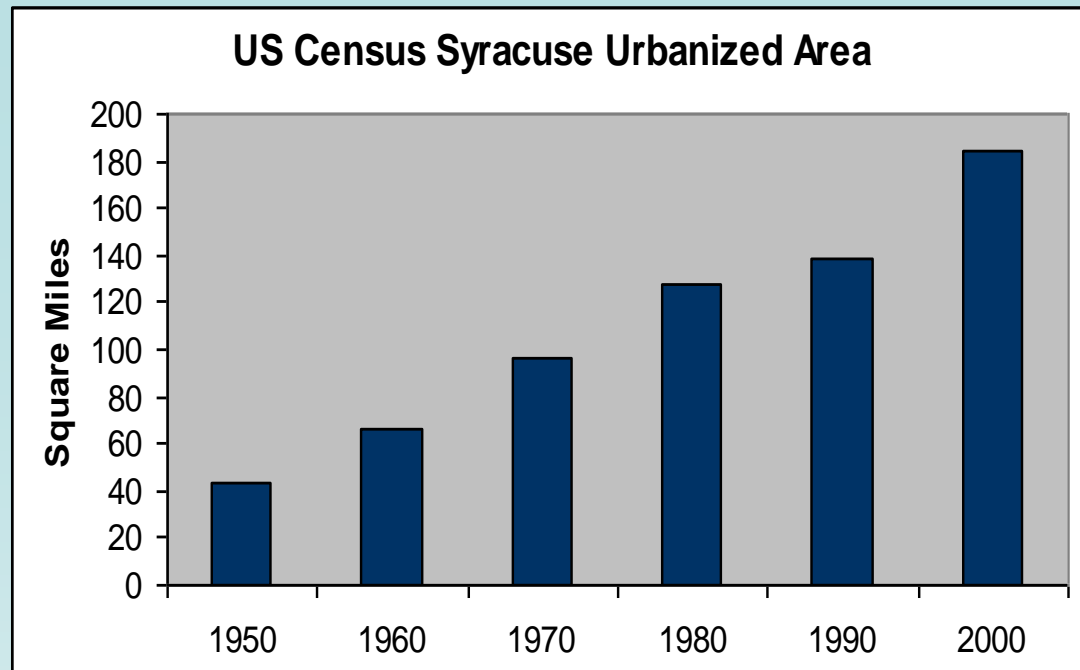
Transportation Infrastructure

- Added 61 Miles of New Road since 2000
- 43% Increase in Daily VMT since 1990
- Average Commute is Now Over 20 Minutes

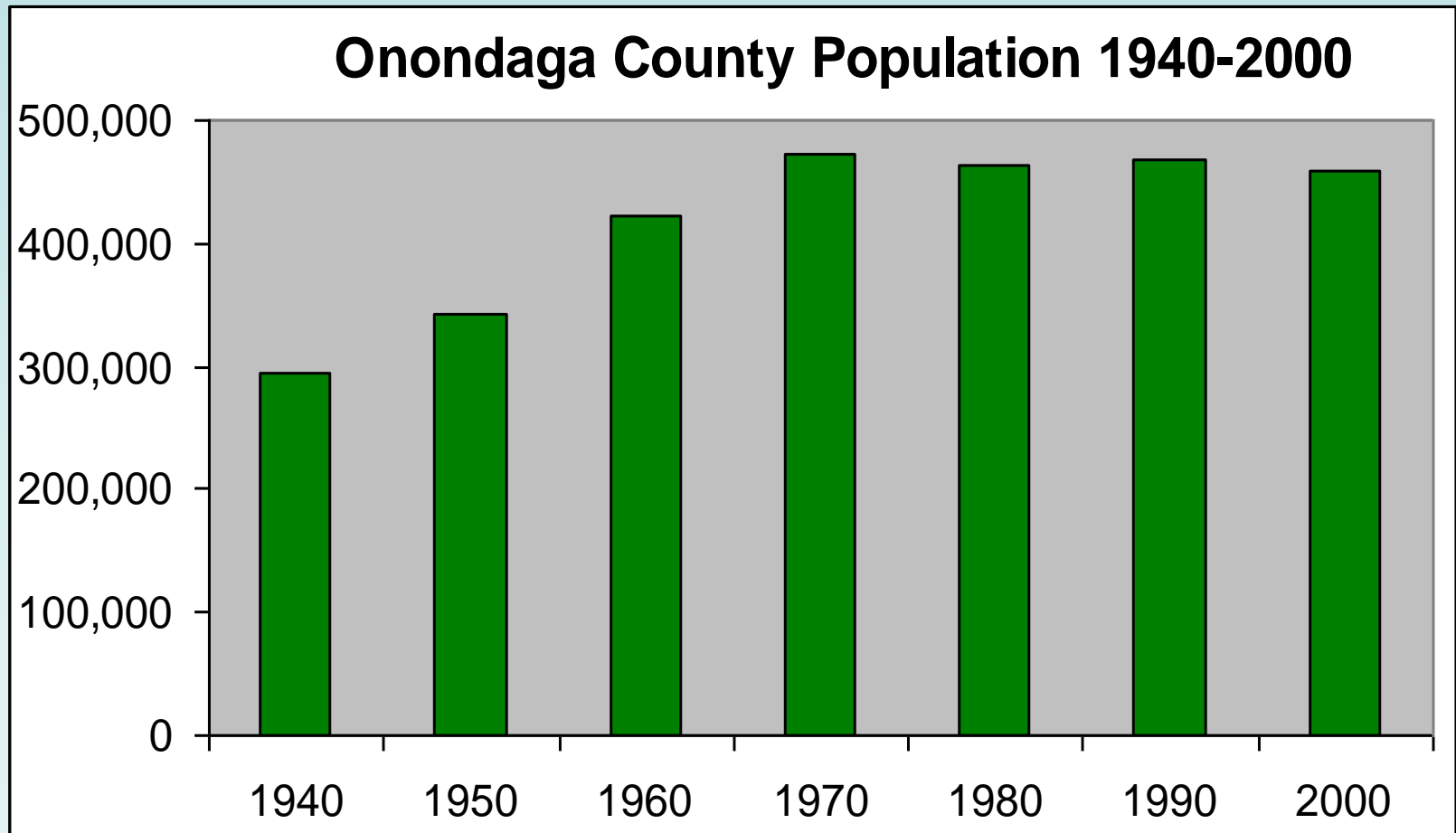


Expansion of Our Urbanized Area

- Urban land increased 92% since 1970
- Increased by 50 square miles in 1990s
- Suburbanization of rural towns



NO Regional Population Growth



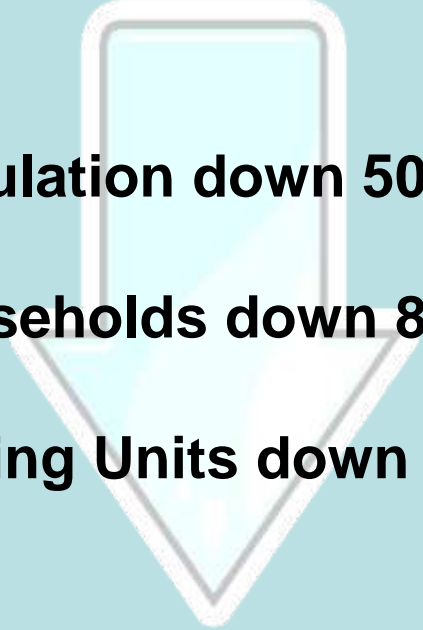
Population Trends

City of Syracuse 1980-2000

Population down 50,000

Households down 8,000

Housing Units down 3,600

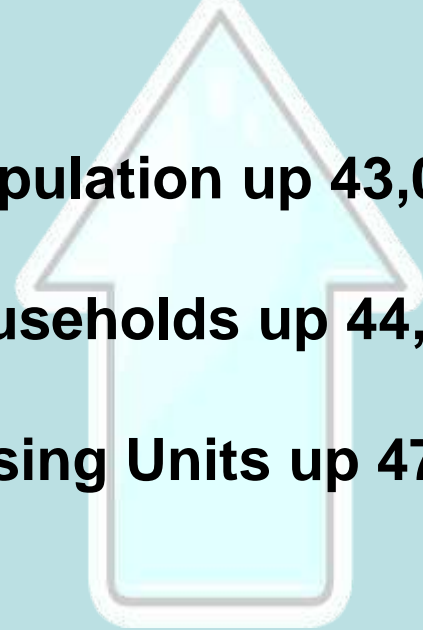


Towns 1980-2000

Population up 43,000

Households up 44,000

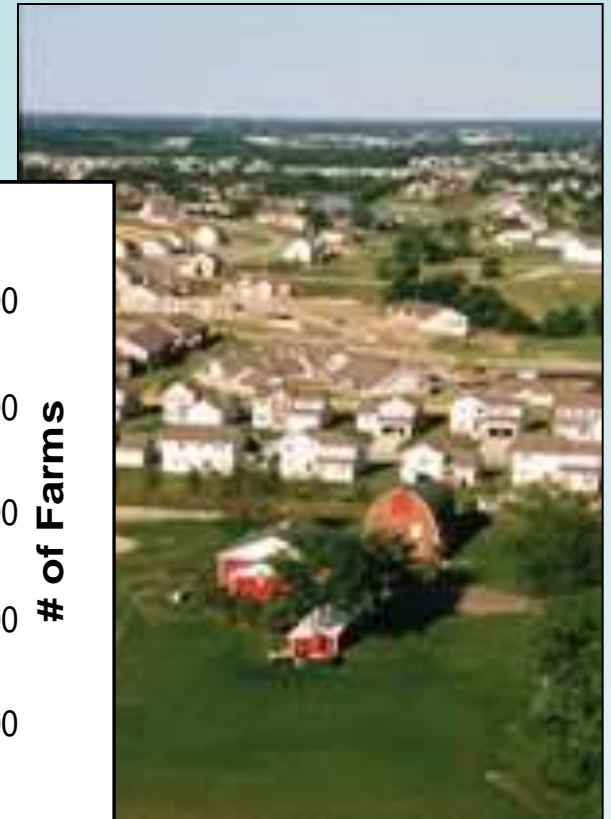
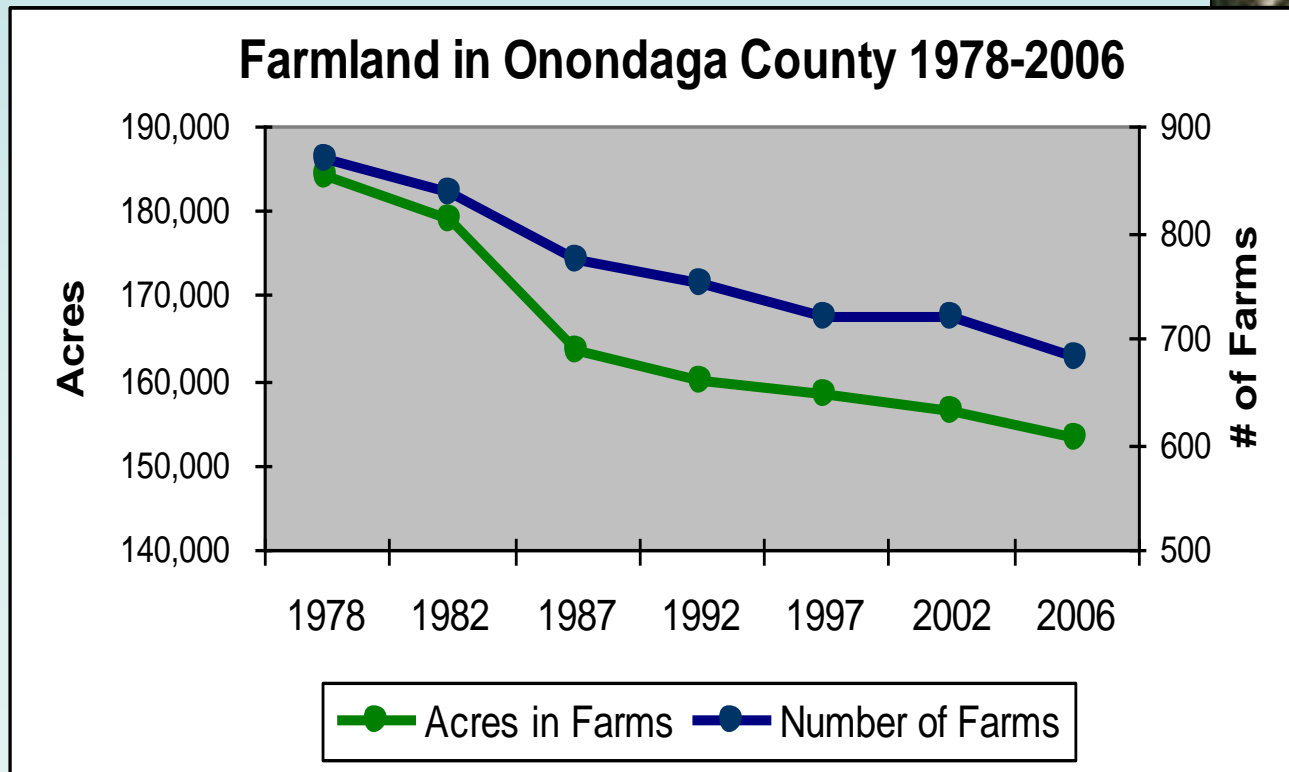
Housing Units up 47,000



Continuing Challenges....

The Challenges Are....

- A Reduction in Farmland



The Challenges Are....

- A Reduction in Farmland
- **Inability to Support Mass Transit**

[« BACK TO LATEST NEWS](#)

The following article is part of our archive

Centro plans fare hike, service cuts

To fill 111 hearings on how to close expected \$5 million bu

January 28, 2009

iez

writer

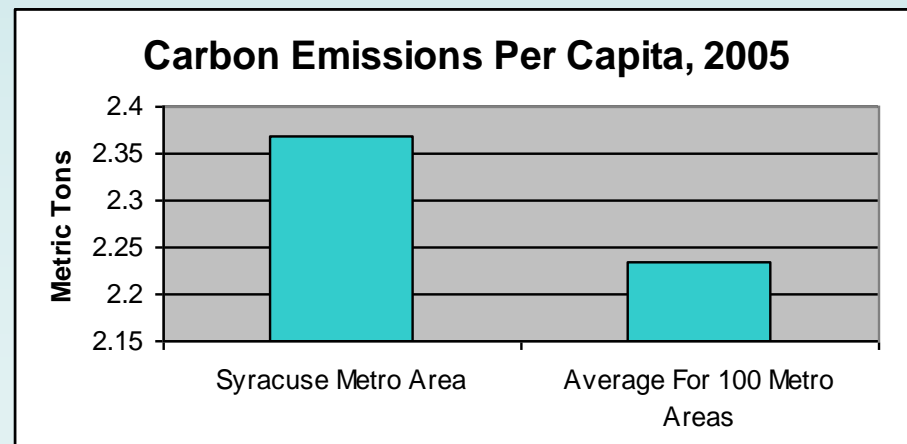
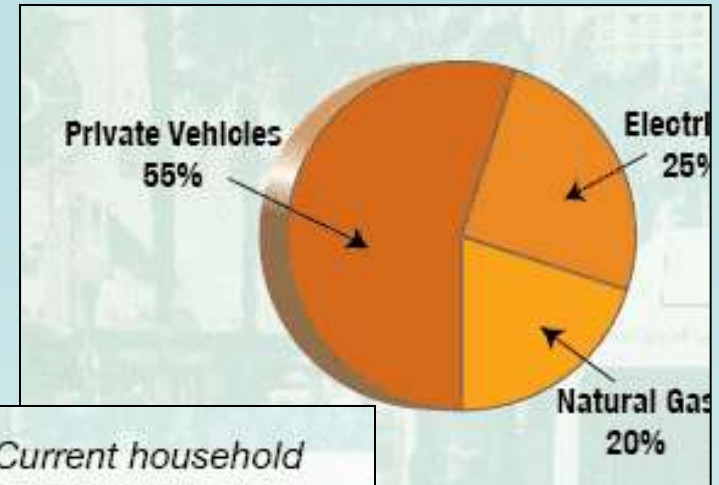
osing to raise bus fares and
ected \$5 million shortfall
uesday.

o increase the Syracuse b
50, officials said. Almost
r the proposal, they said.



The Challenges Are....

- Reduction in Farmland
- Inability to Support Mass Transit
- **A Larger Carbon Footprint**



The Challenges Are....

- A Reduction in Farmland
- An Inability to Support Mass Transit
- Increased driving and a larger carbon footprint
- **Demand for facilities and public services in new areas**



The Challenges Are....

- A Reduction in Farmland
- An Inability to Support Mass Transit
- Increased driving and a larger carbon footprint
- Demand for facilities and public services in new areas
- **Abandoned neighborhoods, buildings and job centers**

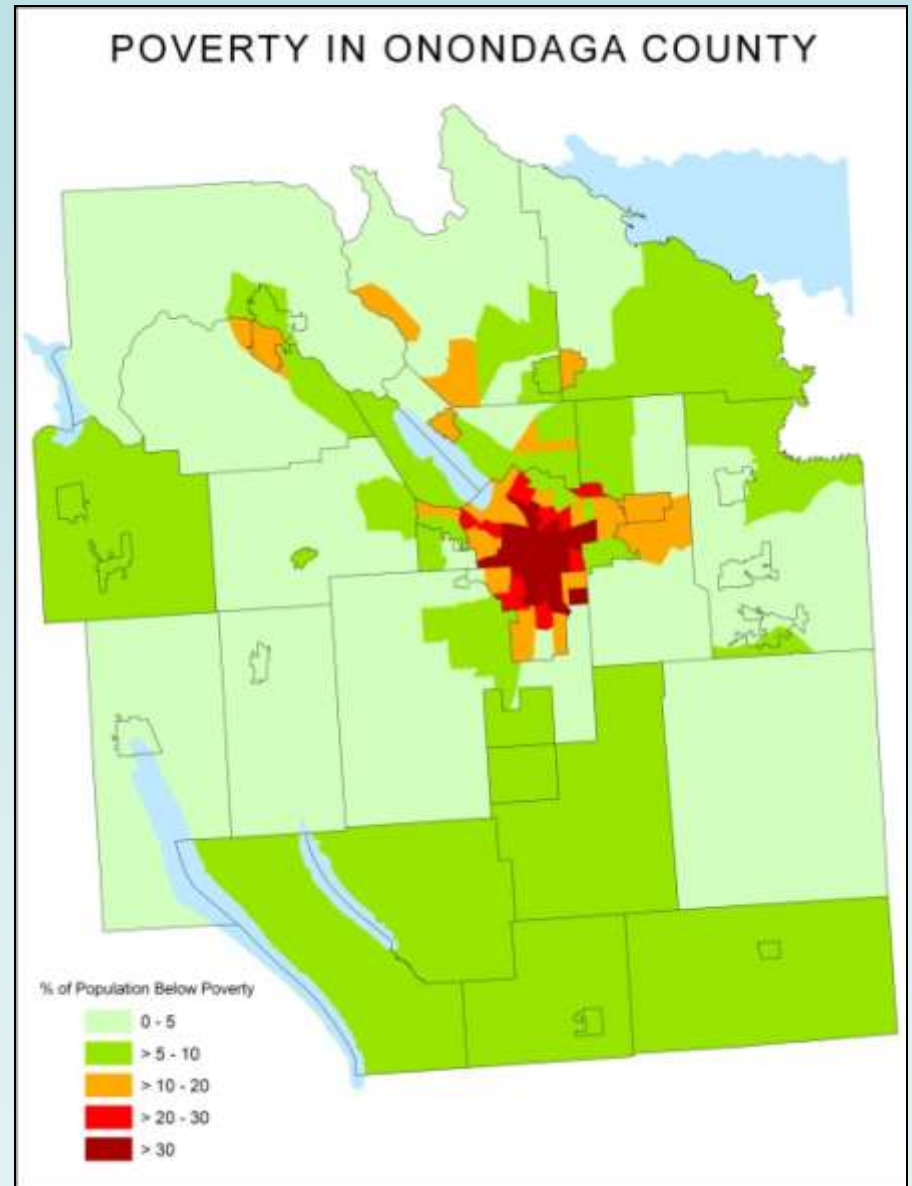


The Challenges Are....

- A Reduction in Farmland
- Inability to Support Mass Transit
- Increased Carbon Footprint
- Demand for Services in New Areas
- Abandoned Neighborhoods
- **Concentrations of Poverty**

Individuals Below Poverty

Syracuse City	25.4%
Onondaga Co. Towns	5.4%



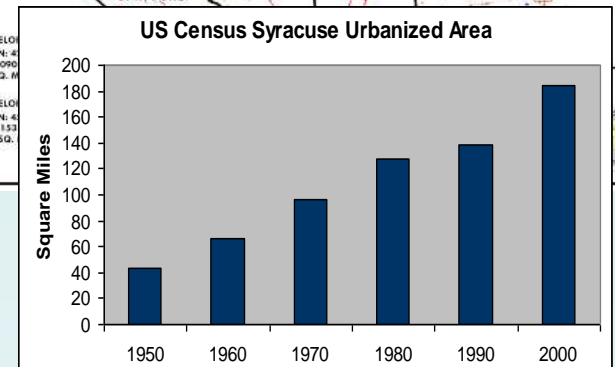
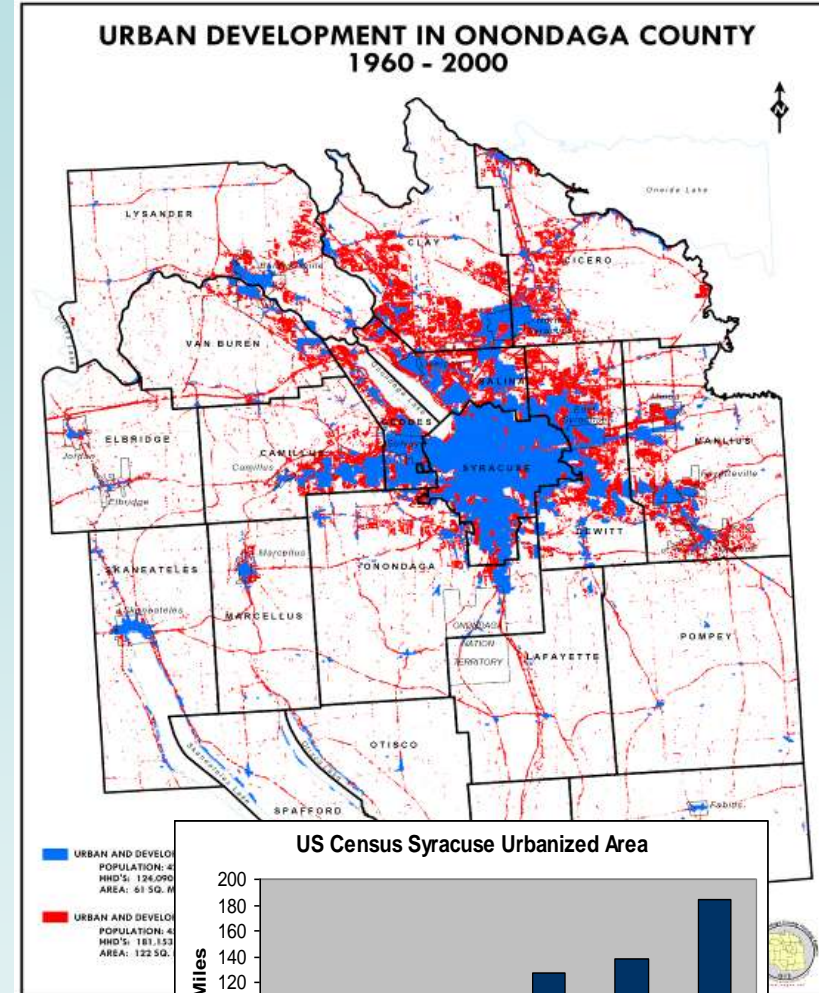
The Challenges Are....

- A Reduction in Farmland
- An Inability to Support Mass Transit
- Increased driving and a larger carbon footprint
- Demand for facilities and public services in new areas
- Abandoned neighborhoods, buildings and job centers
- Concentrations of poverty
- **Economic Competitiveness**



The Challenges Are....

- A Reduction in Farmland
- An Inability to Support Mass Transit
- Increased driving and a larger carbon footprint
- Demand for facilities and public services in new areas
- Abandoned neighborhoods, buildings and job centers
- Concentrations of poverty
- Economic Competiveness
- **Spreading our tax dollars over a larger geographic area**

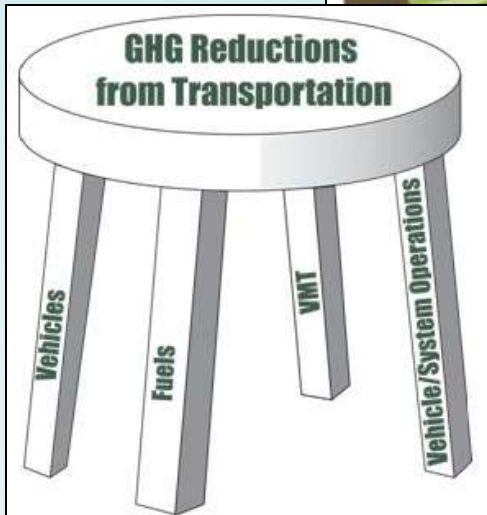
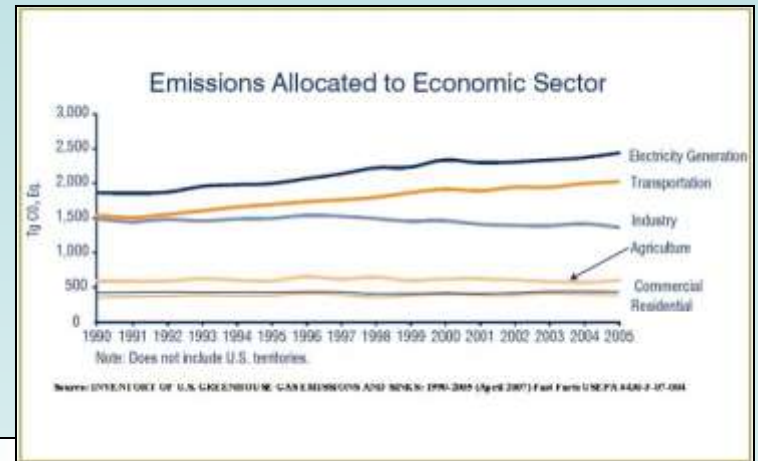
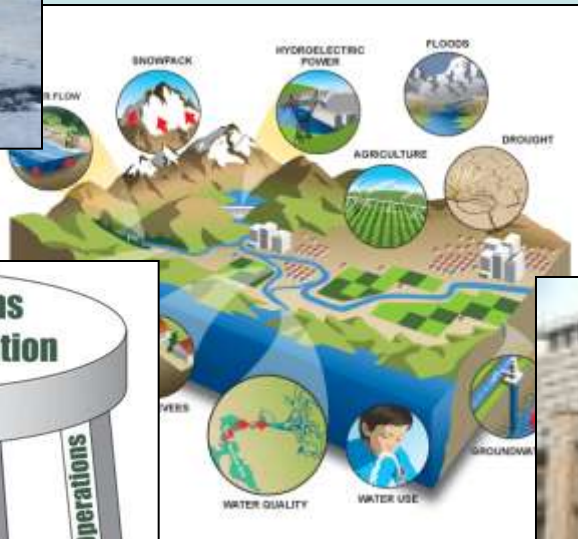


*Some
Other
Trends...*



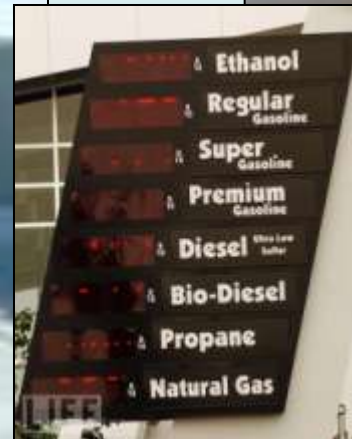
Some Other Trends....

- Climate Change and Reducing Pollution



Some Other Trends....

- **Climate Change and Reducing Pollution**
- **Rising Gas and Energy Prices**



Some Other Trends....

- Climate Change and Reducing Pollution
- Rising Gas and Energy Prices
- Obesity, Public Health, and Walkable Neighborhoods



breaking news, health, top news

MRI:
AGNETIC RESONANCE
SCANS
CENTRAL NEW YORK
810

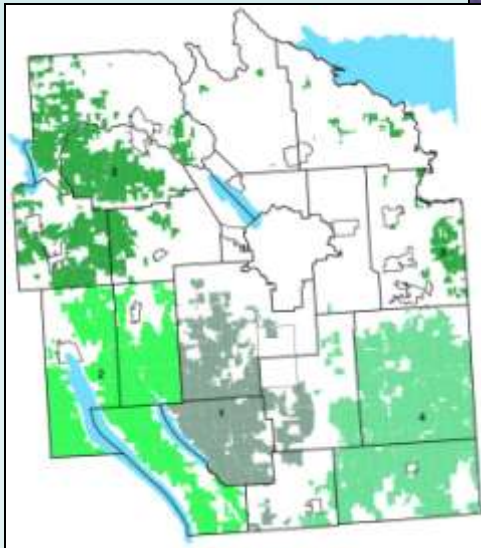
Excellus report: 43 percent of tested Central New Yorkers have high cholesterol

By James T. Mulder / The Post-Standard
September 16, 2009, 9:08AM



Some Other Trends....

- **Climate Change and Reducing Pollution**
- **Rising Gas and Energy Prices**
- **Obesity, Public, and Walkable Neighborhoods**
- **Protecting Water and Open Space Resources**



Some Other Trends....

- **Climate Change and Reducing Pollution**
- **Rising Gas and Energy Prices**
- **Obesity, Public, and Walkable Neighborhoods**
- **Protecting Water and Open Space Resources**
- **Community Discussion of Government Modernization and Efficiency**



Some Other Trends....

- **Climate Change and Reducing Pollution**
- **Rising Gas and Energy Prices**
- **Obesity, Public, and Walkable Neighborhoods**
- **Protecting Water and Open Space Resources**
- **Community Discussion of Government Modernization and Efficiency**
- **Smart Growth Legislation**



The New County Land Use Plan

- **Define good growth in term of Sustainability**
- **Advocate for Smart Growth**
- **Reinvest in existing communities**
- **Develop compact, walkable mixed-use neighborhoods**
- **Provide transportation options – transit, complete streets**
- **Discourage expansion of existing infrastructure**
- **Encourage use of green infrastructure**
- **Protect open space, farmland and water resources**
- **Promote energy efficiency and green building**
- **Discuss government modernization and efficiency**

Syracuse-Onondaga County Planning Agency



Don Jordan, SOCPA Director

donjordan@ongov.net

Megan Costa, Planning Services Mgr.

megancosta@ongov.net

(315)435-2611

www.ongov.net/planning